

# Dynamo Sprint 03

DIM\_03

19.09.2024

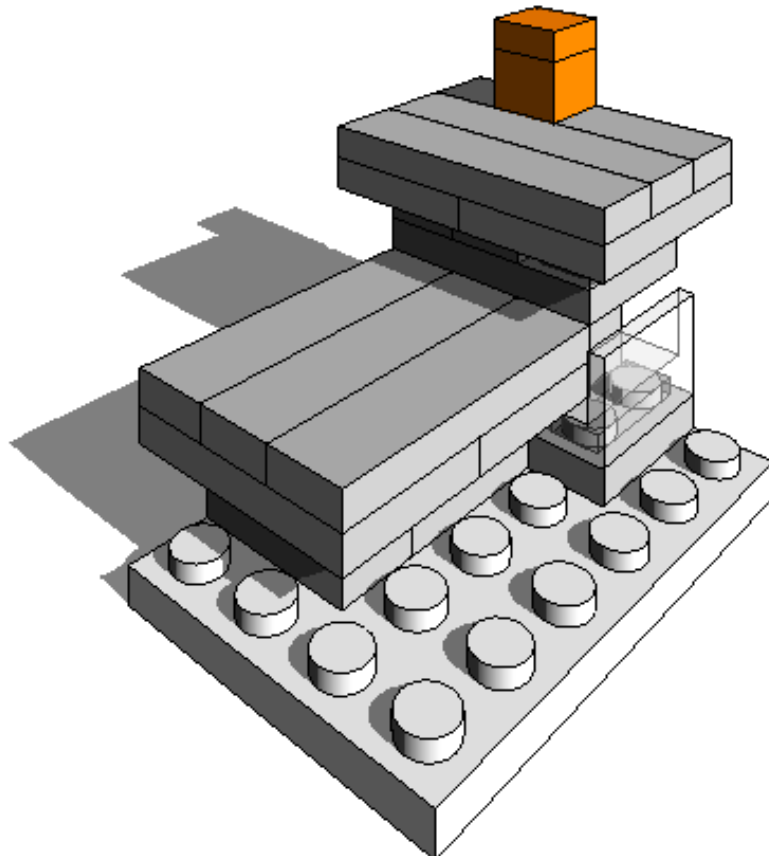
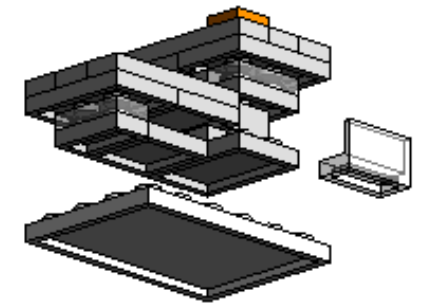
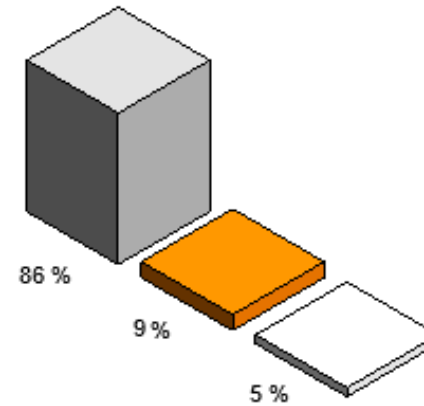


# LHouse Data

Number of bricks: 0

Weight of Project: 0

Cost of Project: 0.00



Source: [www.bricklink.com](http://www.bricklink.com)

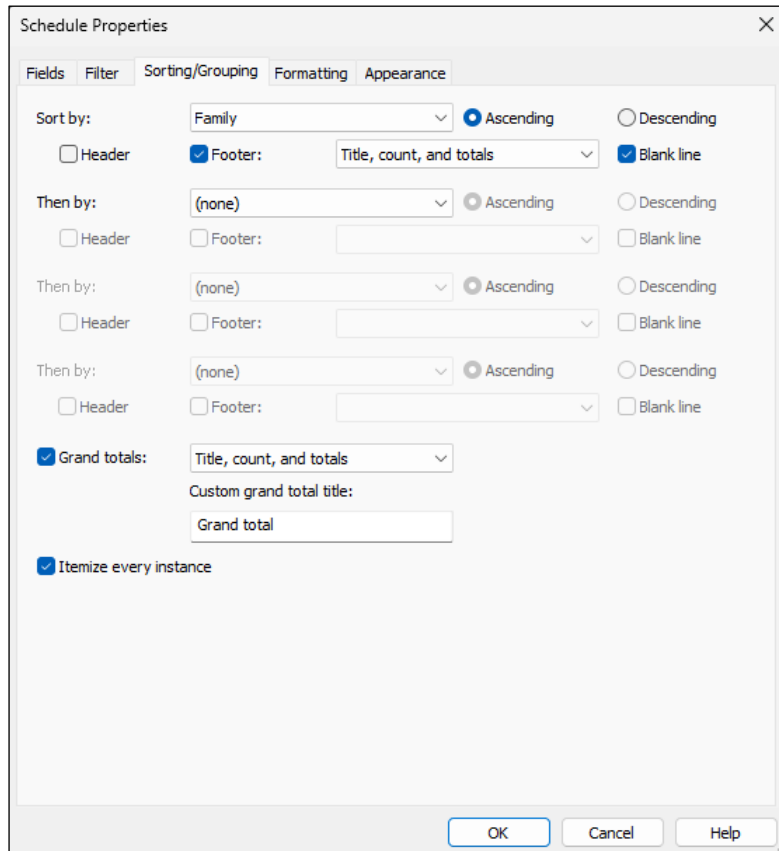
LHouse Data Overview						
Count	Family	Type	Weight (Grams)	Material	Cost (Euro)	Comments
1	oneBrickPlate	1H_1x1	0.13	ob_grey	0.17	
1	oneBrickPlate	1H_1x1	0.13	ob_orange	0.17	
1	oneBrickPlate	1H_1x2	0.36	ob_grey	0.11	
1	oneBrickPlate	1H_1x2	0.36	ob_clear	0.11	
1	oneBrickPlate	1H_1x2	0.36	ob_grey	0.11	
1	oneBrickPlate	1H_1x2	0.36	ob_clear	0.11	
1	oneBrickPlate	1H_1x2	0.36	ob_grey	0.11	
1	oneBrickPlate	1H_1x2	0.36	ob_grey	0.11	
1	oneBrickPlate	1H_1x4	0.54	ob_grey	0.67	
1	oneBrickPlate	1H_1x4	0.54	ob_grey	0.67	
1	oneBrickPlate	1H_1x4	0.54	ob_grey	0.67	
1	oneBrickPlate	1H_1x4	0.54	ob_grey	0.67	
1	oneBrickPlate	1H_1x4	0.54	ob_grey	0.67	
1	oneBrickPlate	1H_1x4	0.54	ob_grey	0.67	
1	oneBrickPlate	1H_2x2	0.5	ob_grey	2.00	
1	oneBrickPlate	1H_2x3	0.93	ob_grey	0.36	
1	oneBrickPlate	1H_2x3	0.93	ob_grey	0.36	
1	oneBrickPlate	1H_2x3	0.93	ob_grey	0.36	
1	oneBrickPlate	1H_2x3	0.93	ob_grey	0.36	
1	oneBrickPlate	1H_2x3	0.93	ob_grey	0.36	
1	oneBrickPlate	1H_2x3	0.93	ob_grey	0.36	
1	oneBrickPlate	1H_2x3	0.93	ob_grey	0.36	
1	oneBrickPlate	1H_4x6	3.3	ob_white	0.25	
1	oneBrickPlate	3H_1x1	0.44	ob_orange	0.05	
1	oneBrickPlate	3H_1x2	0.83	ob_grey	0.38	
1	oneBrickAngle	3H_1x2	0.46	ob_clear	0.78	
1	oneBrickAngle	3H_1x2	0.46	ob_grey	0.78	
Grand total: 25			16.69		10.75	

# Create Schedule

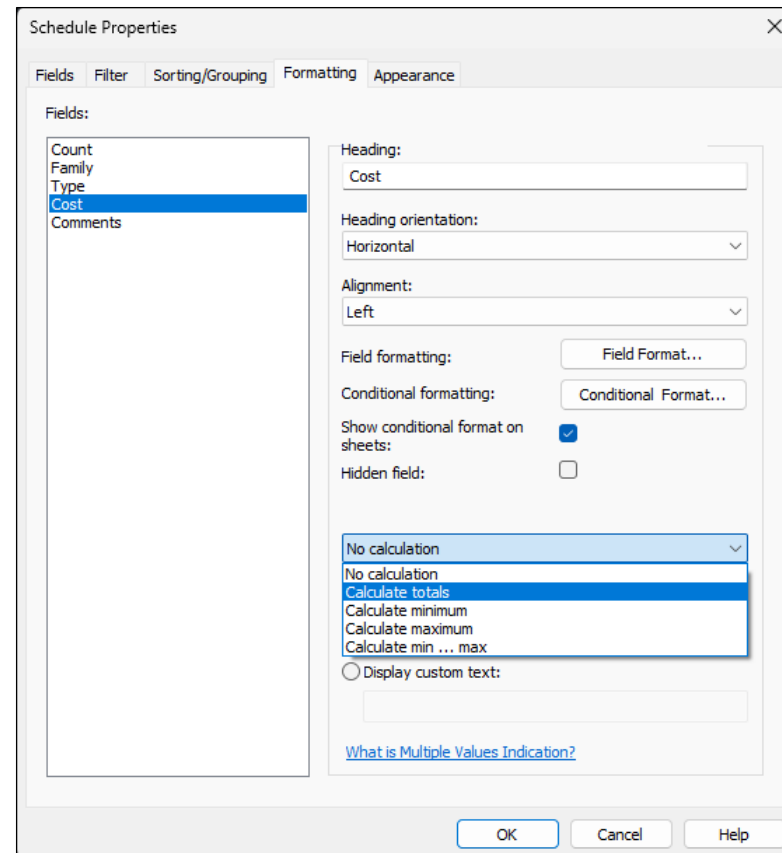
The image illustrates the process of creating a schedule in Revit. It shows the 'Project Browser' on the left, the 'New Schedule' dialog box in the center, and the 'Schedule Properties' dialog box on the right. The 'New Schedule' dialog box is set to 'Generic Models' and 'Schedule building components'. The 'Schedule Properties' dialog box shows the 'Fields' tab with 'Generic Models' selected, and a list of available fields including 'Assembly Code', 'Assembly Description', 'Assembly Name', 'Description', 'Elevation from Level', 'Exchange Entity ID', 'Exchange ID', 'Export to IFC', 'Export to IFC As', 'Export Type to IFC', 'Export Type to IFC As', 'Family and Type', 'IFC Predefined Type', 'IfcGUID', 'Image', 'Keynote', 'Level', and 'Manufacturer'. The 'Scheduled fields (in order)' list includes 'Count', 'Family', 'Type', 'Cost', and 'Comments'. The resulting schedule table is shown at the bottom right.

<Generic Model Schedule>				
A	B	C	D	E
Count	Family	Type	Cost	Comments
1	oneBrickPlate	1H_2x3	0.36	
1	oneBrickPlate	1H_2x2	2.00	
1	oneBrickPlate	1H_1x2	0.11	
1	oneBrickPlate	3H_1x2	0.38	
1	oneBrickPlate	1H_1x2	0.11	
1	oneBrickPlate	1H_2x3	0.36	
1	oneBrickPlate	1H_2x3	0.36	
1	oneBrickPlate	1H_1x4	0.67	
1	oneBrickPlate	1H_2x3	0.36	
1	oneBrickPlate	1H_2x3	0.36	
1	oneBrickPlate	1H_1x2	0.11	
1	oneBrickPlate	1H_1x1	0.17	
1	oneBrickPlate	1H_2x3	0.36	
1	oneBrickPlate	1H_1x2	0.11	
1	oneBrickPlate	1H_1x2	0.11	
1	oneBrickPlate	3H_1x1	0.05	
1	oneBrickPlate	1H_1x2	0.11	
1	oneBrickAngle	3H_1x2	0.78	
1	oneBrickPlate	1H_1x1	0.17	
1	oneBrickPlate	1H_1x4	0.67	
1	oneBrickPlate	1H_1x4	0.67	
1	oneBrickPlate	1H_1x4	0.67	
1	oneBrickPlate	1H_1x4	0.67	
1	oneBrickPlate	1H_1x4	0.67	
1	oneBrickAngle	3H_1x2	0.78	
1	oneBrickPlate	1H_4x6	0.25	

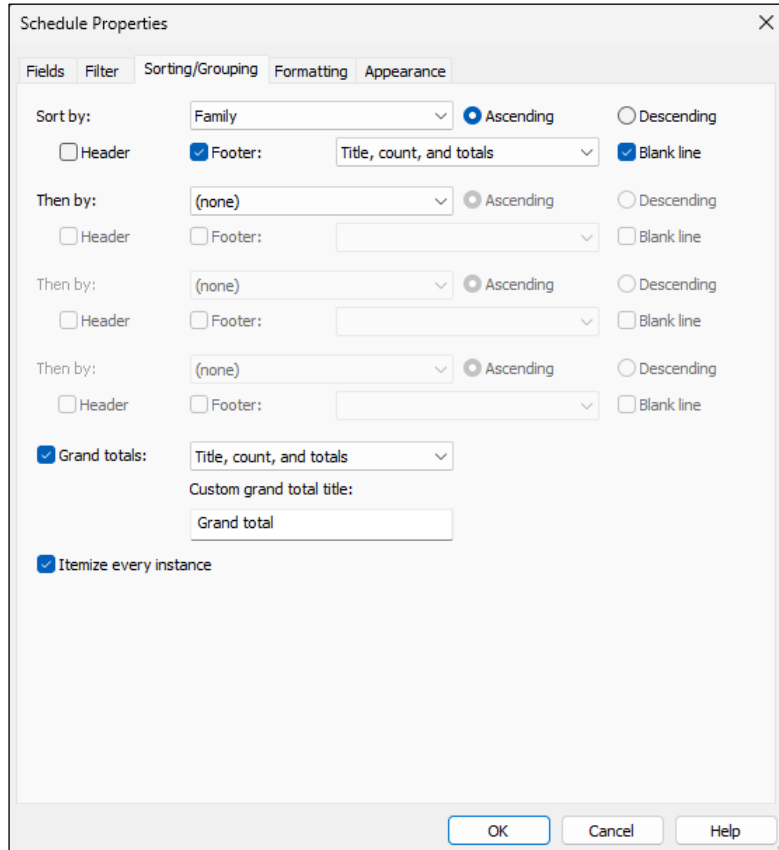
# Sorting (Grand totals, Itemize every instance)



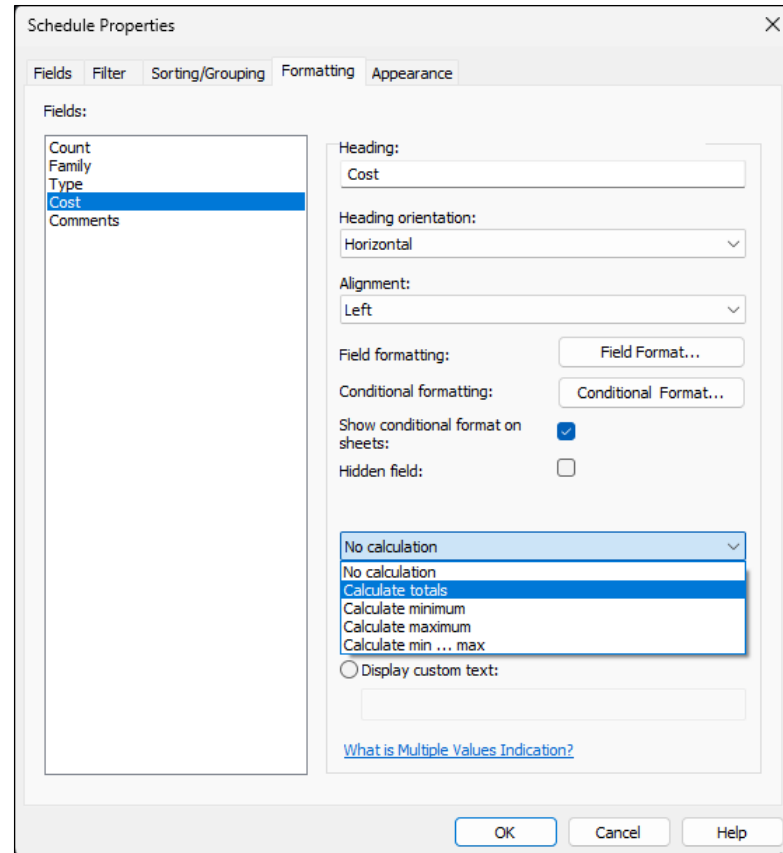
# Formatting (Calculate totals)



# Sorting (Grand totals, Itemize every instance)



# Formatting (Calculate totals)



# Drag schedule to sheet

Project Browser - 20240904\_DIM\_On... | 01 - Project\_Datasheet\_01 | {3D} | LHouse Data Overview

Search

- L005\_Top
- 3D Views
  - 3D\_Dia\_XX
  - 3D\_Exploded\_XX
  - Cam\_01\_XX
  - {3D}
- Elevations (Building Elevation)
  - Back
  - Front
  - Left
  - Right
- Legends
- Schedules/Quantities (all)
- LHouse Data Overview
- Sheets (all)
  - 01 - Project\_Datasheet\_01
    - 3D View: 3D\_Dia\_XX
    - 3D View: 3D\_Exploded\_XX
    - 3D View: Cam\_01\_XX
  - 02 - Project\_Datasheet\_02
- Families
  - Analytical Links
  - Annotation Symbols
    - Automatic Up/Down Direction
  - BarGraphLabel
    - BarGraphLabel
  - Bending Detail
  - Fixed Up Direction
  - M\_Area Tag
  - M\_Callout Head
  - M\_Centreline
  - M\_Door Tag
  - M\_Elevation Mark Body\_Circle
  - M\_Elevation Mark Body\_Square
  - M\_Elevation Mark Pointer\_Circle
  - M\_Elevation Mark Pointer\_Square
  - M\_Grid Head - Circle

**LHouse Data 01**

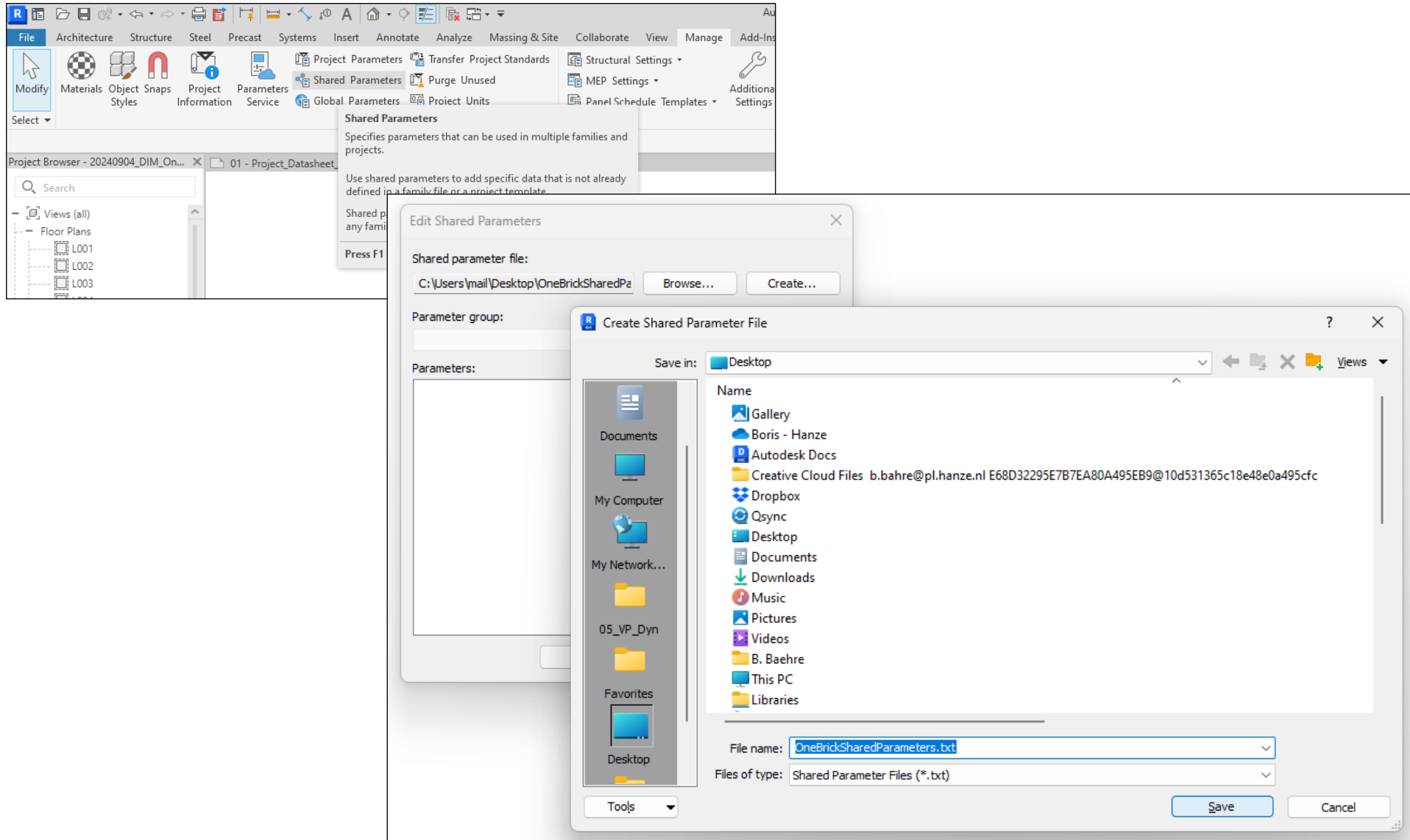
Number of bricks: 25  
Weight of Project: 0  
Cost of Project: 0.00

80 % 9 % 5 %

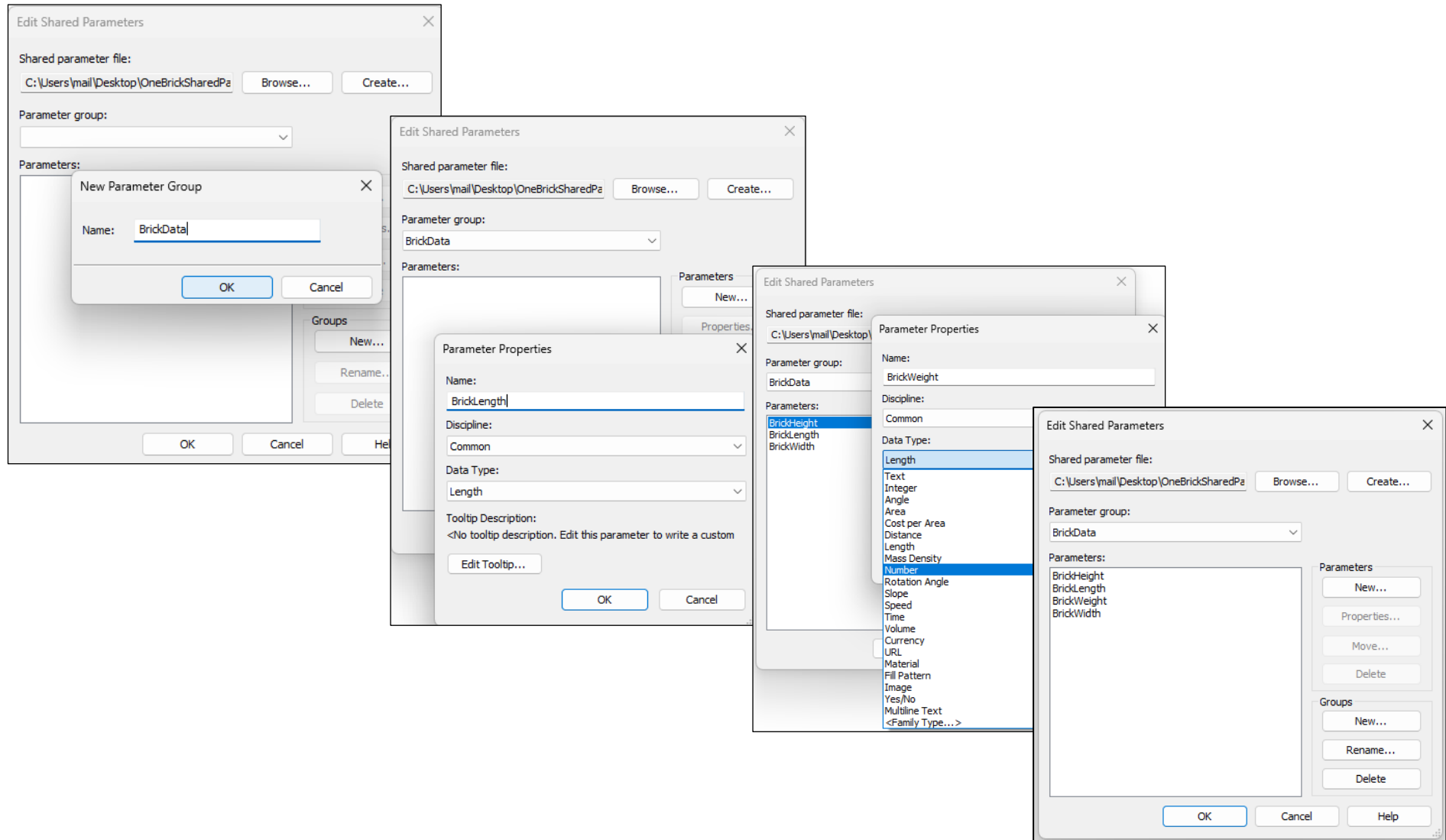
Source: www.bricklink.com

Boris Bæhre, BABO, 12.09.2024

# Custom/Shared Parameters

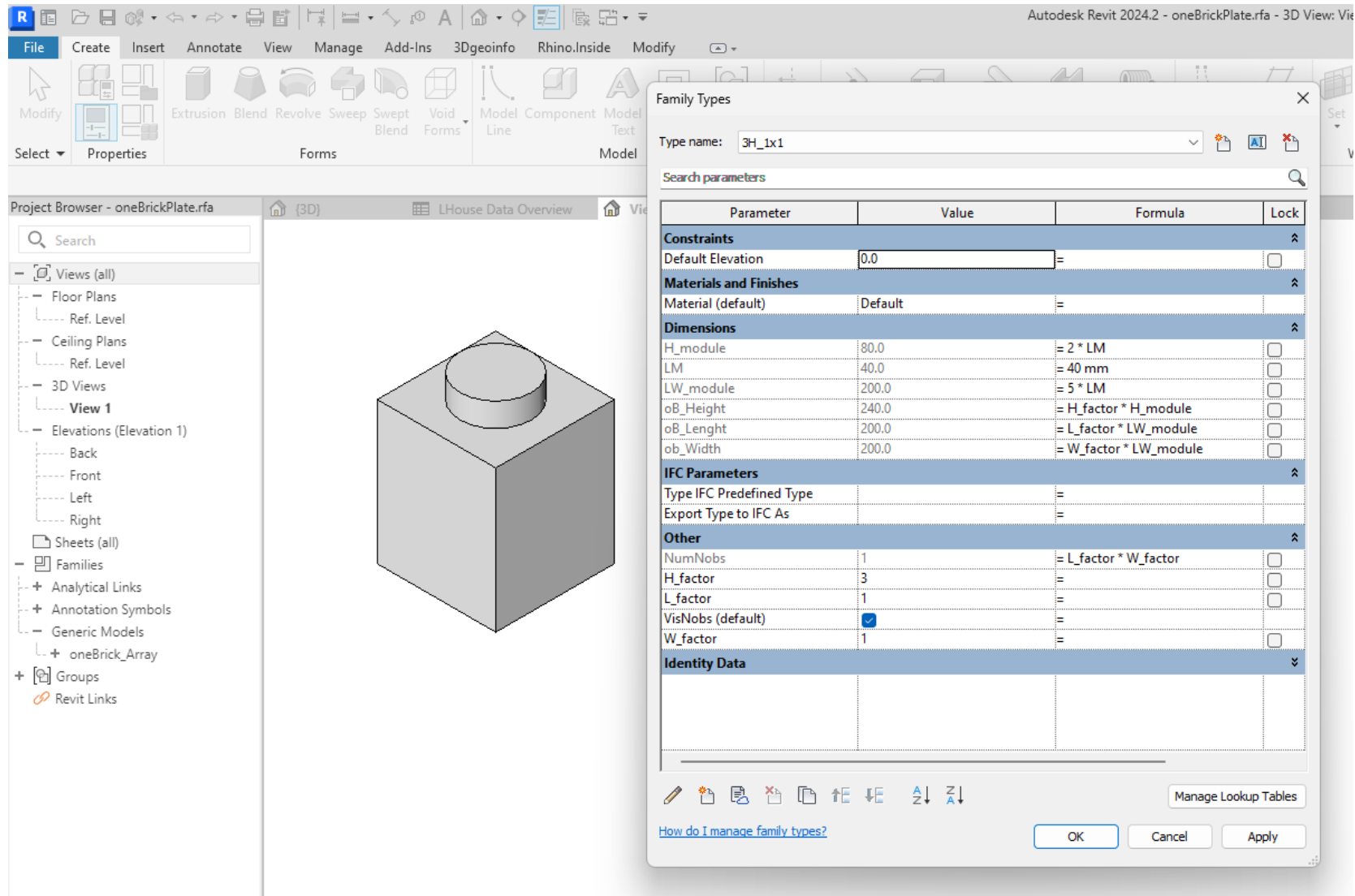


# Create group & parameters

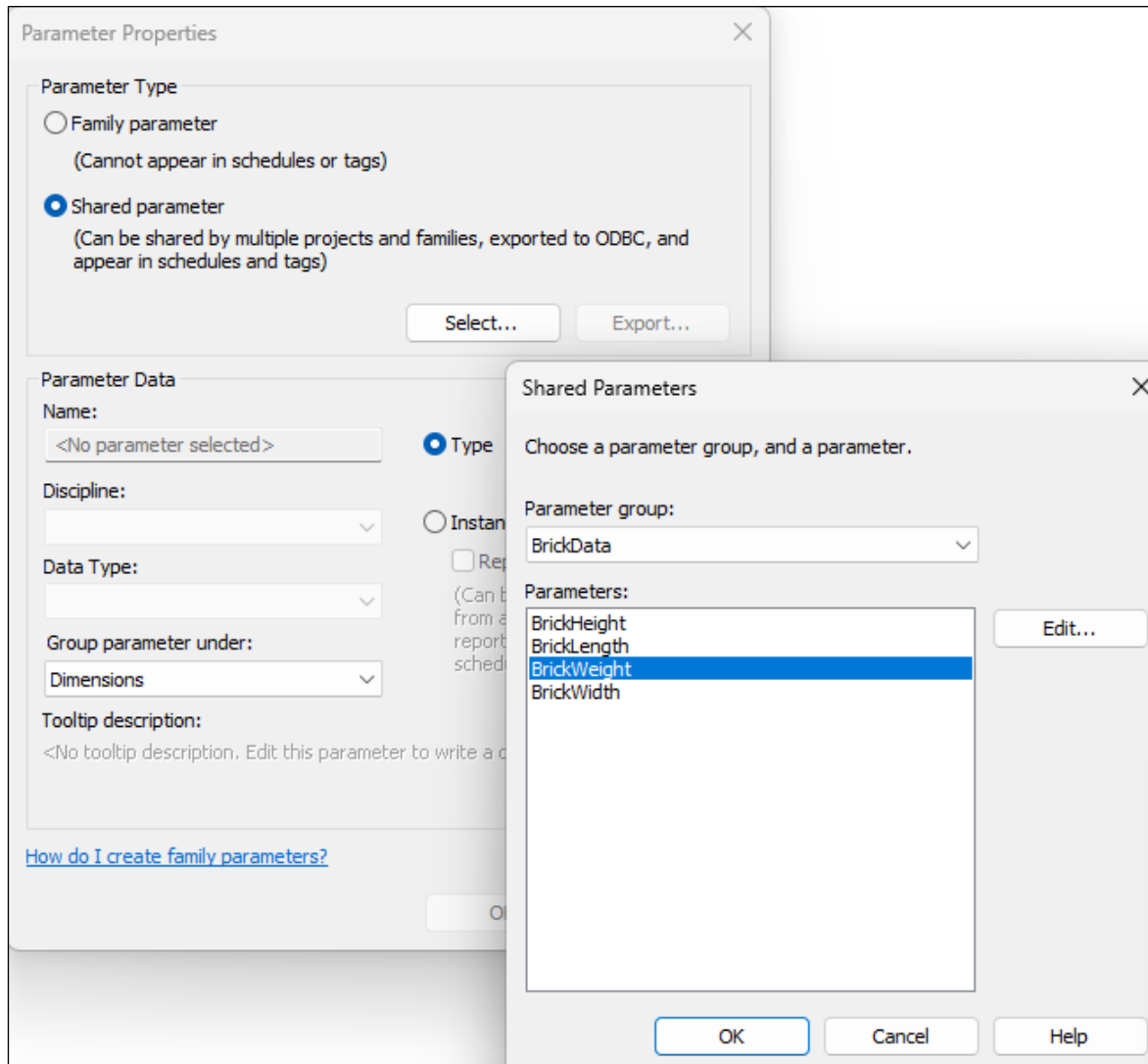




# Open Family & Family Types



# Create a new parameter based on the shared parameter file



# Load family into project

Family Types

Type name: 3H\_1x1

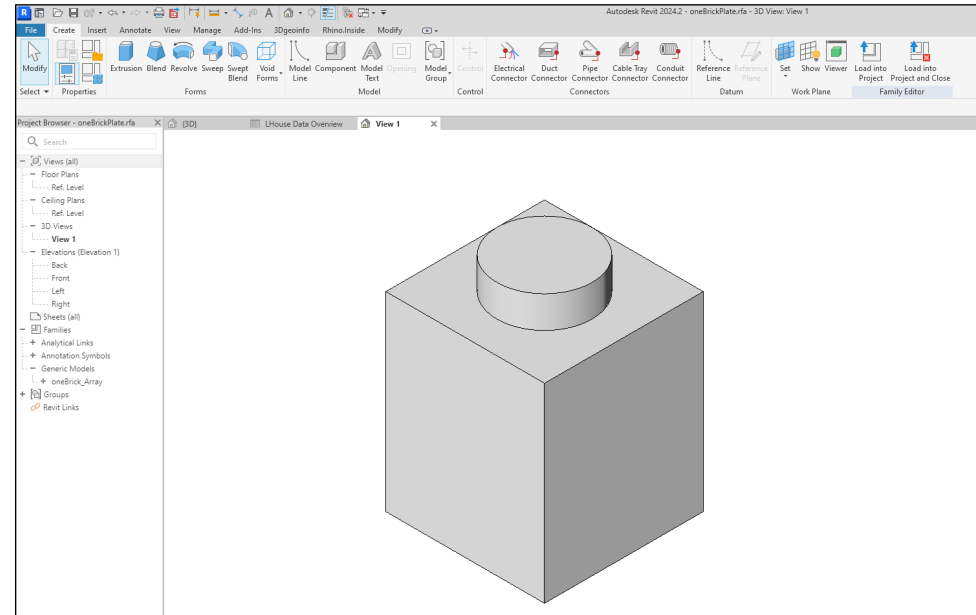
Search parameters

Parameter	Value	Formula	Lock
<b>Constraints</b>			
Default Elevation	0.0	=	<input type="checkbox"/>
<b>Materials and Finishes</b>			
Material (default)	Default	=	
<b>Dimensions</b>			
H_module	80.0	= 2 * LM	<input type="checkbox"/>
LM	40.0	= 40 mm	<input type="checkbox"/>
LW_module	200.0	= 5 * LM	<input type="checkbox"/>
oB_Height	240.0	= H_factor * H_module	<input type="checkbox"/>
oB_Length	200.0	= L_factor * LW_module	<input type="checkbox"/>
oB_Width	200.0	= W_factor * LW_module	<input type="checkbox"/>
<b>IFC Parameters</b>			
Type IFC Predefined Type		=	
Export Type to IFC As		=	
<b>Other</b>			
NumNobs	1	= L_factor * W_factor	<input type="checkbox"/>
H_factor	3	=	<input type="checkbox"/>
L_factor	1	=	<input type="checkbox"/>
VisNobs (default)	<input checked="" type="checkbox"/>	=	
W_factor	1	=	<input type="checkbox"/>
WeightBrick	0.000000	=	
<b>Identity Data</b>			

Manage Lookup Tables

[How do I manage family types?](#)

OK Cancel Apply



# Add values to shared parameter

The image shows a screenshot of Autodesk Revit 2024.2. The main window displays a 3D model of a brick structure. The left-hand side shows the Project Browser with a tree view of the model's hierarchy, including Floor Plans (L001-L005), 3D Views, Elevations, Schedules/Quantities, Sheets, and Families. The right-hand side shows the Type Properties dialog box for the selected family, 'oneBrickPlate'. The dialog box is open to the 'Type Parameters' tab, which displays a list of parameters and their values. The 'Weight' parameter is highlighted in blue.

**Type Properties**

Family: oneBrickPlate [Load...]  
Type: 3H\_1x1 [Duplicate...]  
[Rename...]

**Type Parameters**

Param	Value
oB_Le	200.0
ob_Wi	200.0
<b>Identity Data</b>	
Type I	
Keynot	
Model I	
Manuf	
Type C	
URL	
Descr	
Assem	
Cost	0.05
Assem	
Type	
Omni	
Omni	
Code	
<b>IFC Parameters</b>	
Type IFC	
Export	
Export	Default
Type IFC	228xc_CS510hbcrlbMo2tQ
<b>Other</b>	
NumN	1
H_fact	3
L_fact	1
W_fact	1
Weight	0.440000

Sort by: [Icons]  
[<< Preview] [OK] [Cancel] [Apply]

# Find & Add Shared Parameter to schedule

The screenshot shows the 'Schedule Properties' dialog box in Revit. The background is a table titled '<LHouse Data Overview>' with columns: Count, Family, Type, Weight (Grams), Material, Cost (Euro), and Comments. The dialog box has tabs for 'Fields', 'Filter', 'Sorting/Grouping', 'Formatting', and 'Appearance'. Under 'Fields', there is a 'Parameter Name Search' field and a 'Filter Available Fields' button. The 'Available fields' list contains 33 items, with 'WeightBrick' selected. The 'Scheduled fields (in order)' list contains: Count, Family, Type, Material, Cost, and Comments. The 'Material' field is highlighted in blue.

<LHouse Data Overview>						
A	B	C	D	E	F	G
Count	Family	Type	Weight (Grams)	Material	Cost (Euro)	Comments
1	oneBrickPlate	1H_1x1	0.13	oB_grey	0.17	
1	oneBrickPlate	1H_1x1	0.13	oB_orange	0.17	
1	oneBrickPlate	1H_1x2	0.36	oB_grey	0.11	
1	oneBrickPlate	1H_1x2	0.36	oB_clear	0.11	
1	oneBrickPlate	1H_1x2	0.36	oB_grey	0.11	
1	oneBrickPlate	1H_1x2	0.36	oB_clear	0.11	
1	oneBrickPlate	1H_1x2	0.36	oB_grey	0.11	
1	oneBrickPlate	1H_1x2	0.36	oB_grey	0.11	
1	oneBrickPlate	1H_1x4	0.54	oB_grey	0.67	
1	oneBrickPlate	1H_1x4	0.54	oB_grey	0.67	
1	oneBrickPlate	1H_1x4	0.54	oB_grey	0.67	
1	oneBrickPlate	1H_1x4	0.54	oB_grey	0.67	
1	oneBrickPlate	1H_1x4	0.54	oB_grey	0.67	
1	oneBrickPlate	1H_2x2	0.5	oB_grey	2.00	
1	oneBrickPlate	1H_2x3	0.93	oB_grey	0.36	
1	oneBrickPlate	1H_2x3	0.93	oB_grey	0.36	
1	oneBrickPlate	1H_2x3	0.93	oB_grey	0.36	
1	oneBrickPlate	1H_2x3	0.93	oB_grey	0.36	
1	oneBrickPlate	1H_2x3	0.93	oB_grey	0.36	
1	oneBrickPlate	1H_2x3	0.93	oB_grey	0.36	
1	oneBrickPlate	1H_4x6	3.3	oB_white	0.25	
1	oneBrickPlate	3H_1x1	0.44	oB_orange	0.05	
1	oneBrickPlate	3H_1x2	0.83	oB_grey	0.38	
1	oneBrickAngle	3H_1x2	0.46	oB_clear	0.78	
1	oneBrickAngle	3H_1x2	0.46	oB_grey	0.78	
Grand total: 25			16.69		10.75	

Note: You can add as many shared parameters (type or Instance) to the Families as you like. Feel free to create a shared parameter file and share it with your team – all members will have the same parameters and name to work with.

• • •