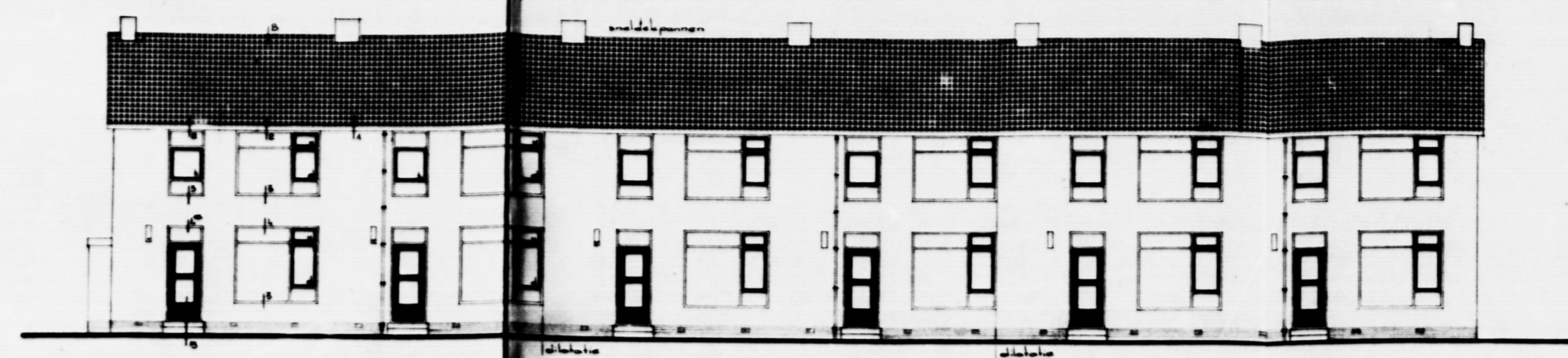
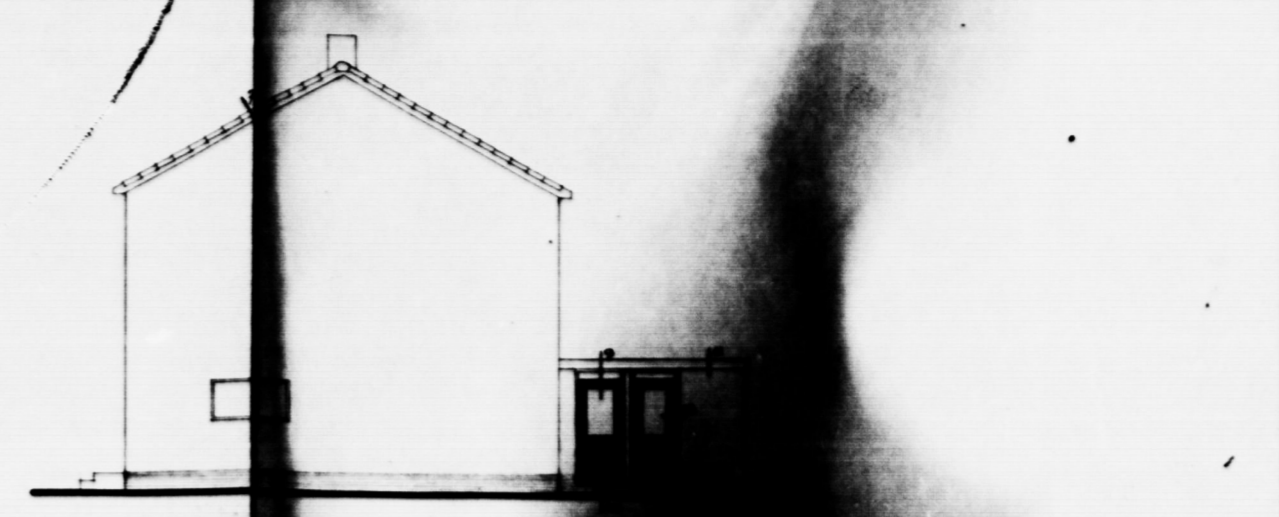


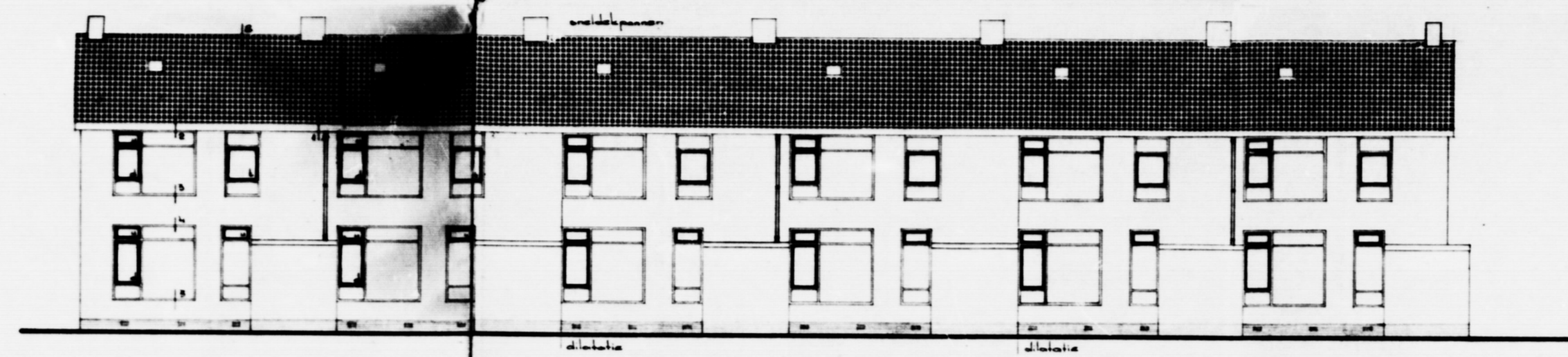
Handwritten initials or notes in the top left corner of the notebook page.



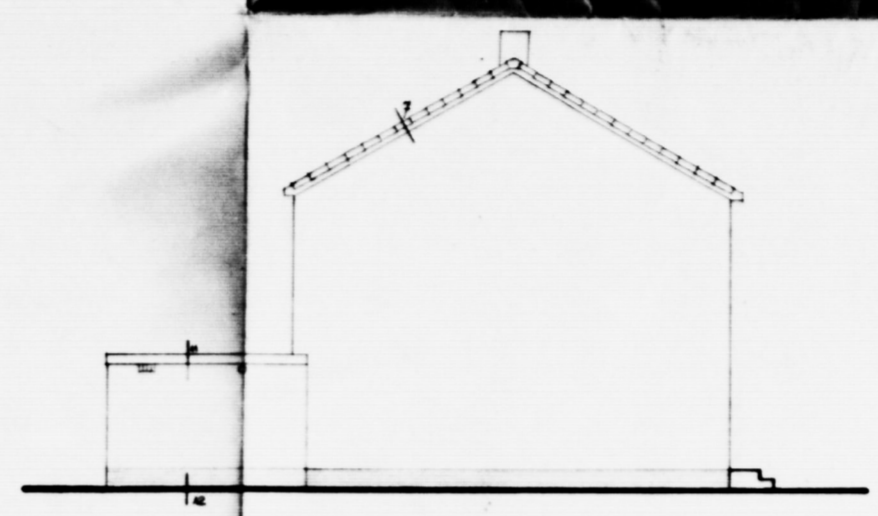
voorgevel



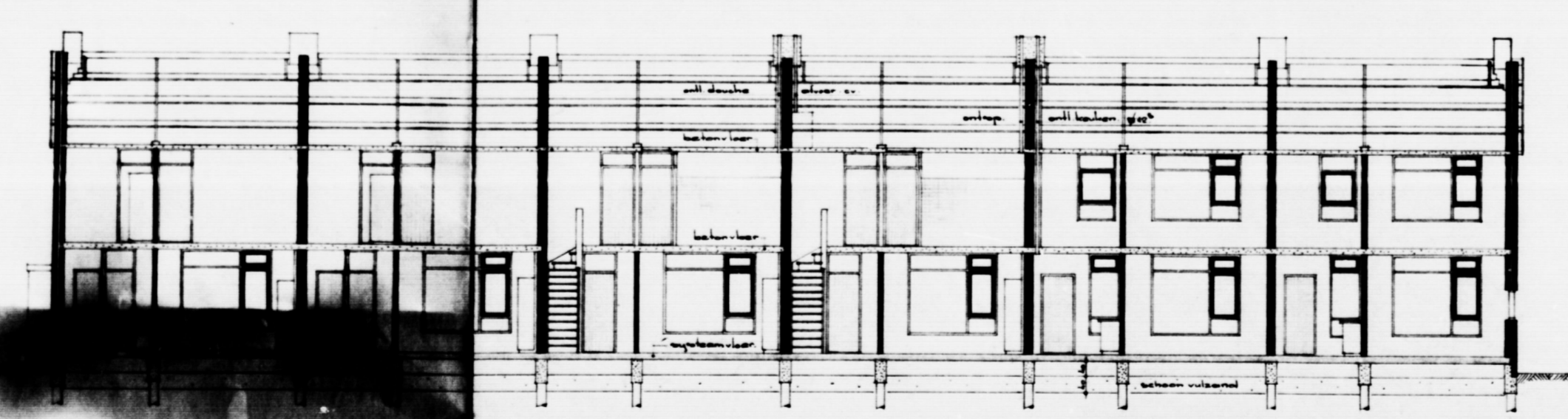
rechter zijgevel



achtergevel

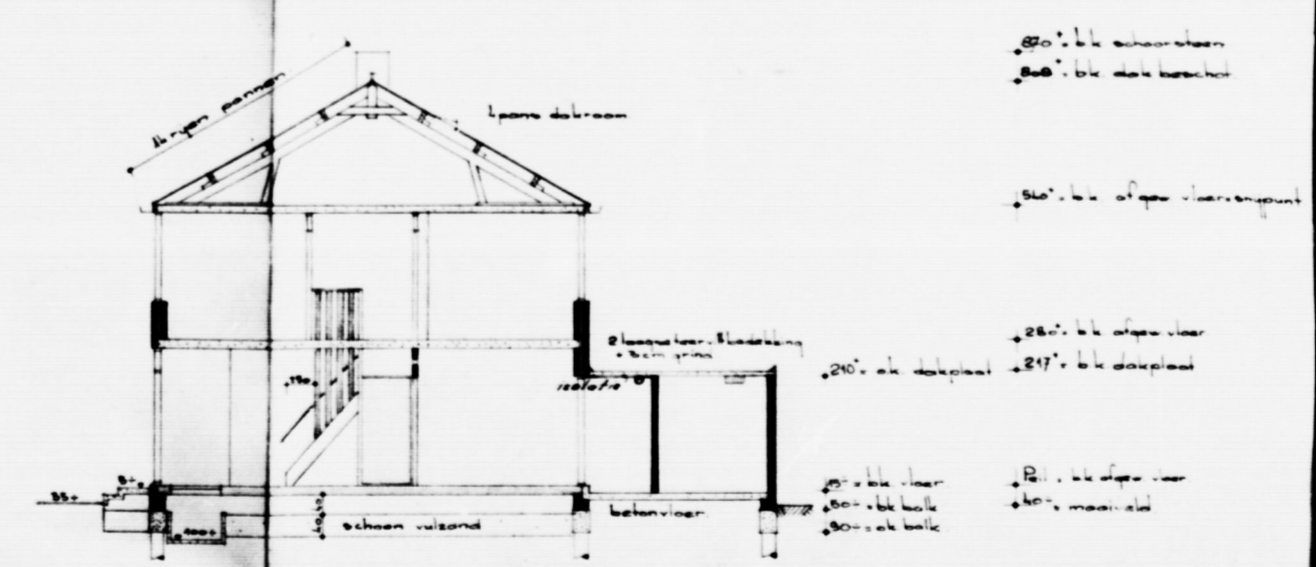


linker zijgevel

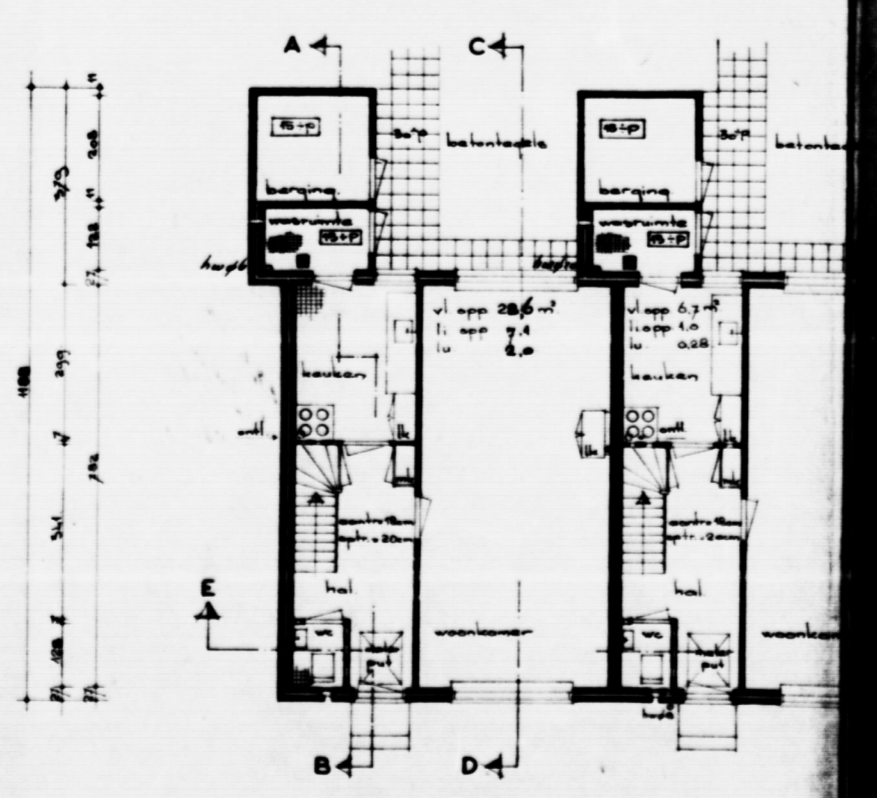
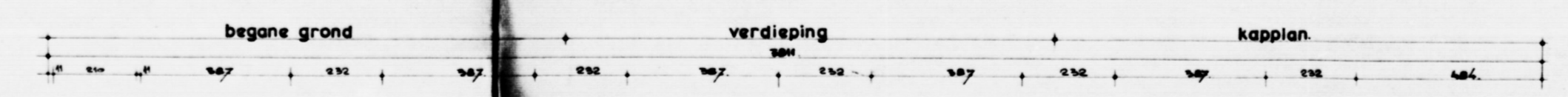


doorsnede E-F

voor het ontwerp en de constructie van de muren en vloeren



doorsnede A-B



plattegronden

Handwritten notes and specifications related to the floor plans, including dimensions and material requirements.

Table with 2 columns: material name and quantity. Includes items like 'metselwerk', 'opzetmetselwerk', 'beton', 'hout', 'isolatie', 'verf', 'glazuur', 'smeermiddel', 'andere'. Quantities are listed in meters, square meters, and cubic meters.