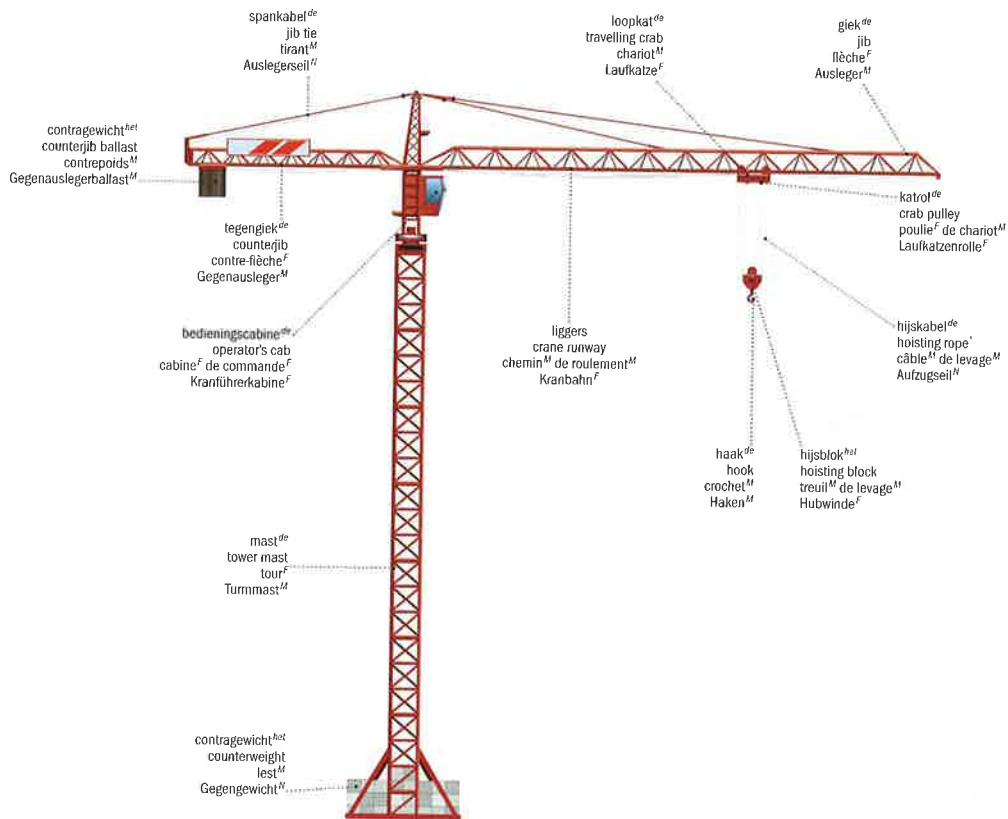


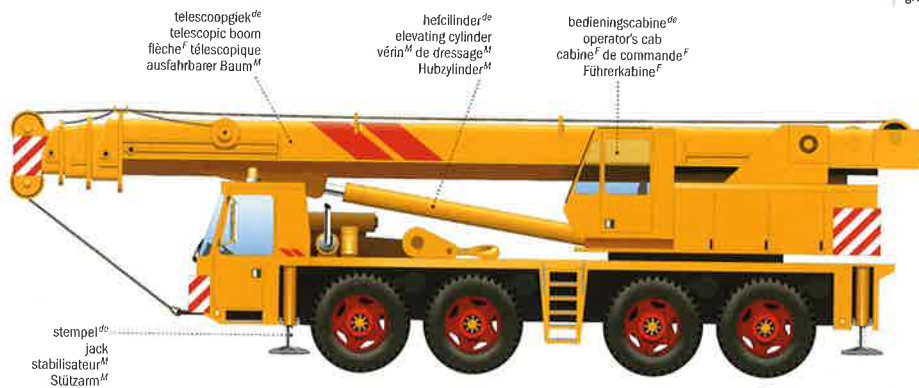
kranen

cranes | grues^F et portique^M | Kräne^M

torenkraan^{de}
tower crane
grue^F à tour^F
Turmkran^M



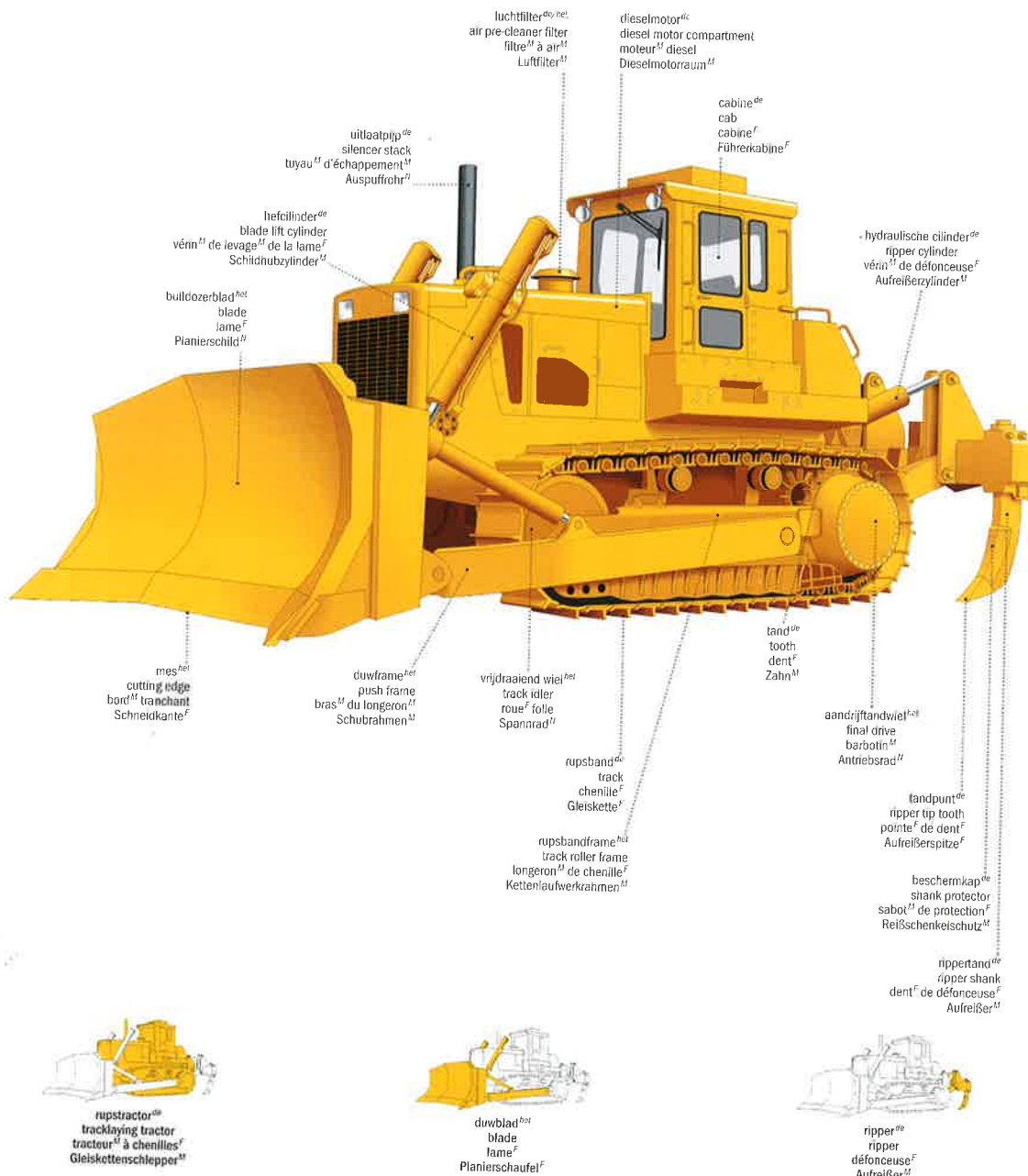
mobile kraan^{de}
truck crane
grue^F sur porteur^M
Fahrkran^M



bulldozer^{de}

bulldozer | bouteur^{fr} | Planierdraupe^f

TRANSPORT EN MACHINERIE

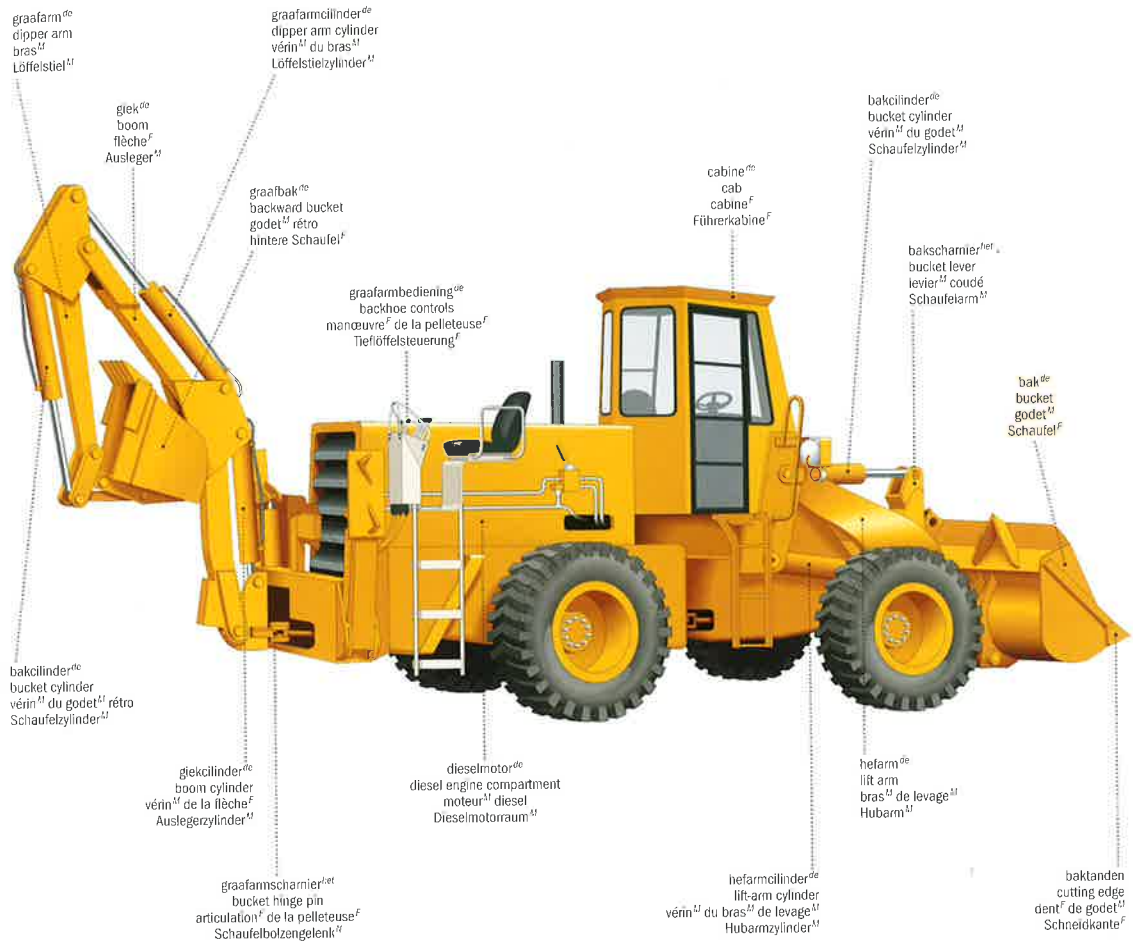


graafarm^{de}
dipper arm
bras^{fr}
Löffelstiel^{fr}

bakcilinder^{de}
bucket cylinder
vérin^{fr} du godet
Schaufelzylinder^{fr}

laad-graafcombinatie^{de}

backhoe loader | chargeuse^f-pelleteuse^f | Radlader^{tt}



TRANSPORT EN MACHINERIE

krabber^{de}

scraper | décapeuse^f | Schrapper¹¹



hydraulische graafmachine^{de}

hydraulic shovel | pelle^f hydraulique | Hydraulik-Hochöffelbagger¹¹



nivelleermachine^{de}

grader | niveleuse^f | Straßenhobel^M



kiepauto^{de}

tipper truck | camion^M benne^f | Muldenkipper^M

