



JUNGLE BALL JUMPING



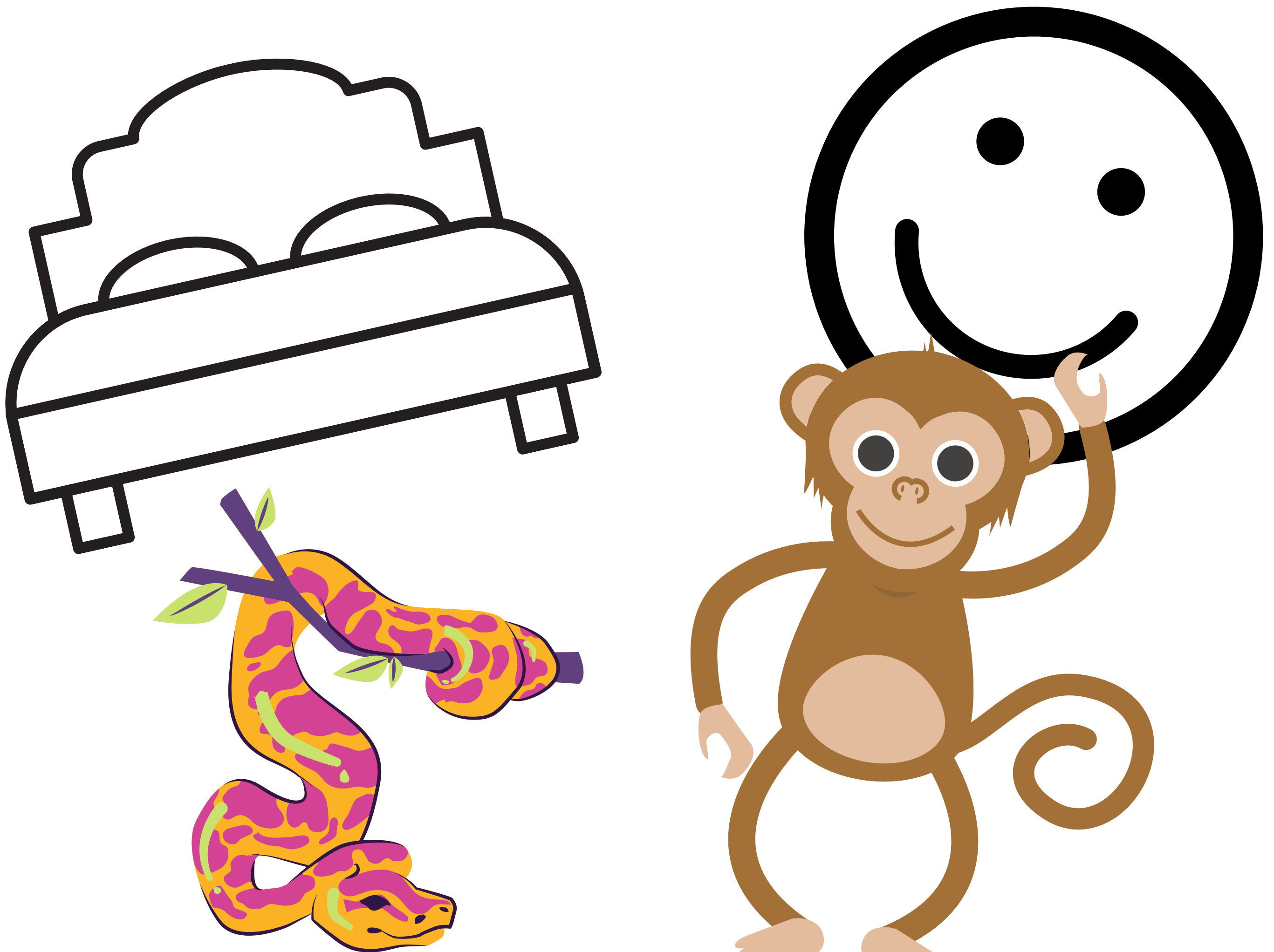
JUNGLE
BAL
JUMPING

SILVER MAHLER



INTRO

MY INSPIRATION IS CANVA BECAUSE I SAW SOMETHING GREEN AND I IMMEDIATELY THOUGHT OF THE JUNGLE. FIRST I THOUGHT ABOUT JUNGLE CLIMBING BUT THEN I THOUGHT OF THIS. I AM GOING TO TELL YOU ABOUT THIS SPORT AND THE RULES OF THIS SPORT. THIS SPORT ISN'T DANGEROUS, IS IT? YOU ARE GOING TO FIND OUT IN A FEW SENTENCES. I AM FINE, I AM A LITTLE BIT TIRED BUT I AM HAPPY.



HOW DOES IT WORK?

YOU ARE IN A TEAM OF 2 PLAYERS AND THERE ARE 2 TEAMS IN TOTAL. THAT ISN'T MUCH, IS IT? YOU PLAY AGAINST THE OTHER TEAM. IN THE JUNGLE THE GROUND IS BOUNCY AND YOU CAN JUMP. IF YOU WANT TO JUMP YOU JUST JUMP WITH TWO FEET ON THE GROUND AND THEN YOU JUMP VERY HIGH IN THE SKY. YOU CAN ALSO RUN VERY FAST IF YOU WANT, IF YOU WANT TO DO THAT YOU NEED TO RUN AND THEN YOUR RUNNING FAST. IF YOU WANT TO STOP RUNNING YOU JUST PRESS YOUR WATCH AND THEN THE SPEED GOES OFF. BUT YOU CAN NOT RUN OR JUMP THE HOLE TIME. IF YOUR WATCH GOES OUT YOUR RUNNING TO LONG AND YOU CAN'T RUN OR JUMP FOR 30 SECONDS. YOU NEED TO TRY TO BRING THE BALL TO THE HOLE OF THE VOLCANO.

BUT EVERY 2 MINUTES THE GROUND GOES WEIRD AND YOU NEED TO CLIMB A TREE FAST. IF YOU DON'T AND THE BALL GOES ON THE GROUND YOU START WITH START AGAIN. BUT YOU NEED TO HAVE THE BALL AND THROW IT IN THE VOLCANO. IF THE OTHER TEAMS SCORES YOU LOSE AND THE OTHER TEAM WINS, DON'T THEY? SO FIRST BOTH TEAMS STANDING FOR THE START-LINE. THE BALL IS THROW IN TO THE AIR AND ONE PERSON OF EACH TEAM HAS TO JUMP AND TRY TO GET THE BALL. THEN YOU AND YOUR TEAM MATE HAS TO GO AS FAST AS POSSIBLE TO THE VOLCANO TO THROW THE BALL IN BUT THERE ARE MANY OBSTACLES TO GO THROE BEFORE YOU ARE CLOSE TO THE VOLCANO. YOU CAN THROW THE BALL TO YOUR TEAM MATE BUT THE OTHER TEAM CAN GRAB THE BALL. IT'S A VERY HARD SPORT BUT ITS VERY FUN TO DO IT! YOU ARE THROWING THE BALL TO YOUR TEAM MATE AND YOUR TEAM MATE HAS TO CATH THE BALL.



RULES

THERE ARE THE **MANY** RULES:

1. THERE ARE 3 **ROUNDS** IN TOTAL.
2. IF **YOU** FIND A COCONUT YOU GET 2 **POINTS**
3. IF **YOU** THROW THE BALL IN THE VOLCANO YOU GET 5 **POINTS**.
4. IF ITS TIE AFTER 3 ROUNDS THE ONE WHO CLIMBT THE TREE FIRST, THAT TEAM WON.
5. WHEN **YOU** WON YOU GET A LEVEL UP.
6. IF **YOU** THROW A COCONUT INTO THE OTHER TEAMS FACE **YOU** GET 1 POINT.
7. IF **YOU** TOUCH THE GROUND WELL THE EARTH IS SHAKKING **YOU** NEED TO START WITH START AIGAN.
8. WHEN **YOU** ARE CLOSE TO THE VOLCANO THE VOLCANO **IS GOING TO** EXPLODE AND **YOU** NEED TO HIDE.
9. IF **YOU** HIDE IN A TREE AND YOU ROLL DOWN YOU GET 2 POINTS.
10. WHICH **STUFF** DO YOU NEED? **YOU** NEED A TEAM PLAYER, GOOD **SHOES**, CLOTHING AND A GOOD CONDITION.
11. HOW FURTHER **YOU** GO HOW HARDER THE **OBSTACLES** ARE.
12. **YOU** ALSO HAVE TO HAVE 2 **BALLS** WITH **YOU** IF THE FIRST ONE IS BROKEN.
13. **YOU** NEED TO PUT **YOUR** WACH ON **YOU** WRISK AND THAN IT JUST POPS ON.
14. THERE **IS** ON THE WACH A BUTTON THAT **YOU** CAN PRESS FOR **STOPING** WHAT **YOUR** DOING. THERE ARE NOT SO **MANY BUTTONS** ON **YOU** WACH.

OUTRO

IIF **YOU** GO ON THIS SPORT **YOU** GET A WAY BETTER CONDITION.
AND IF **YOU** GO ON THIS SPORT **YOU** HAVE A NICE EXPERIENCE WITH THE NATURE.
WELL I HOPE I SEE **YOU** SOON ON THIS SPORT. BYEEEE!!!!